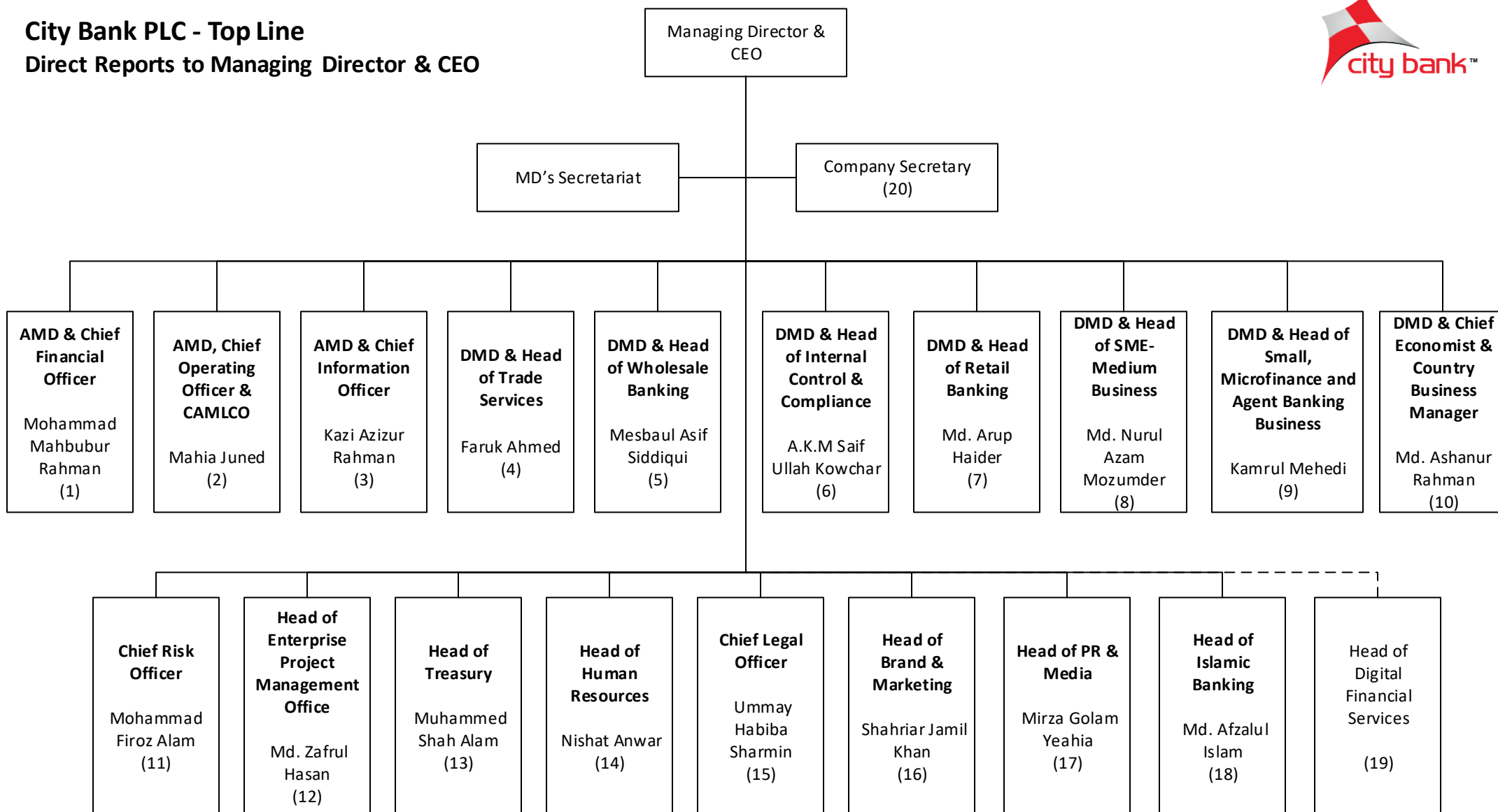


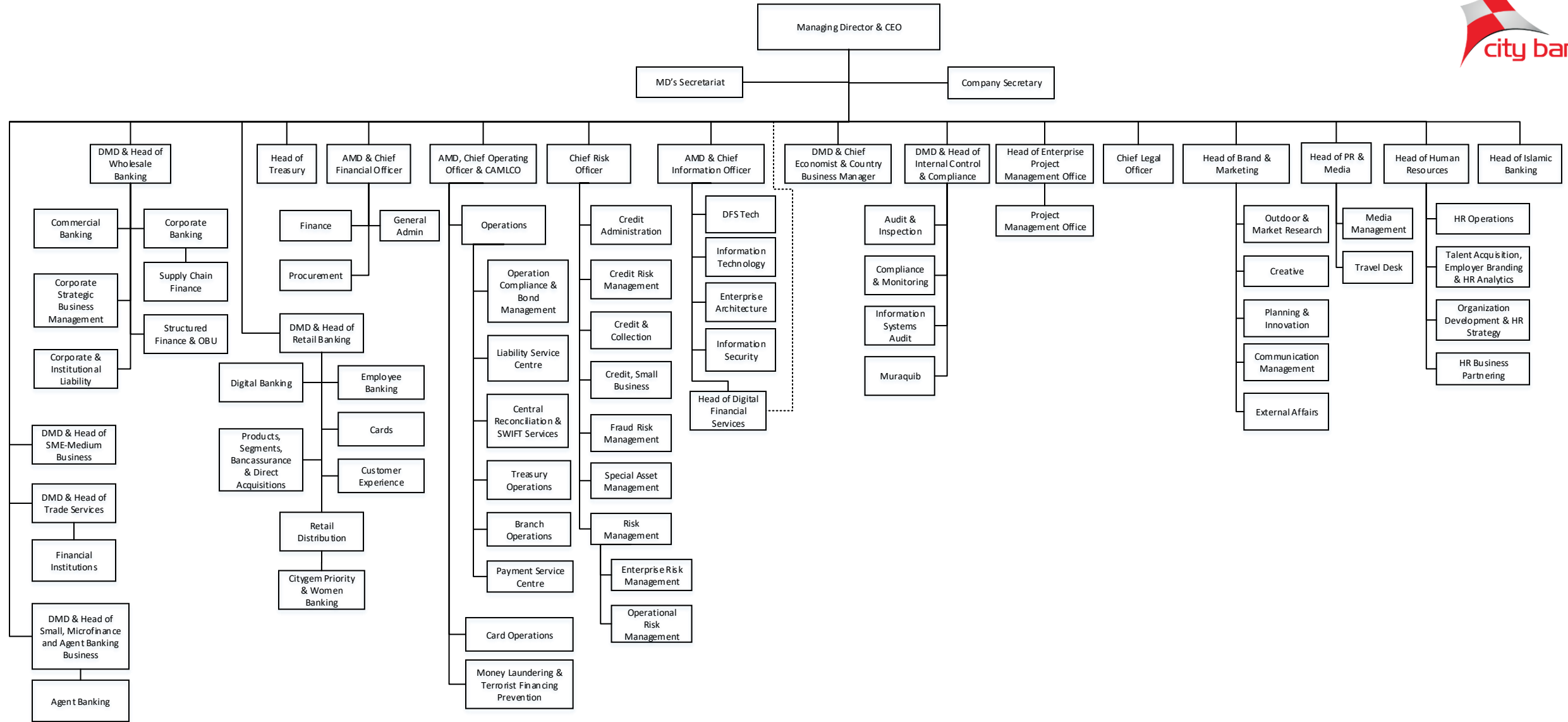
# City Bank PLC - Top Line

## Direct Reports to Managing Director & CEO



### Notes:

- i. (20) Company Secretary directly reports to Board of Directors with a dotted reporting to Managing Director & CEO.
- ii. (11) Chief Risk Officer directly reports to Board Risk Management Committee (BRMC) with a dotted reporting to Managing Director & CEO. S/he performs as the Head of Risk Management Division.
- iii. (6) DMD & Head of Internal Control & Compliance (ICC) directly reports to Managing Director & CEO. However Head of Audit, although being a part of ICC administratively, reports directly to the Chairman of Audit Committee of Board of Directors.
- iv. (18) Head of Islamic Banking directly reports to Managing Director & CEO with a dotted reporting to DMD & Head of Retail Banking .
- iv. (19) Head of Digital Financial Services directly reports to AMD & Chief Information Officer with a dotted reporting to Managing Director & CEO .



**Notes:**

1. DMD & Head of ICC directly reports to Managing Director & CEO. However Head of Audit & Inspection, although being a part of ICC administratively, reports directly to the Chairman of Audit Committee of Board of Directors.
2. Head of Citygem Priority & Women Banking directly reports to Head of Retail Distribution & dotted reports to DMD & Head of Retail Banking and for City Alo - Women Banking, directly reports to DMD & Head of Retail Banking.
3. Head of DFS Tech directly reports to AMD and CIO and dotted report to Head of DFS.
4. Heads of the Enterprise Architecture and Information Security have dotted reporting to Head of Information Technology. Head of Information Security has dotted reporting to DMD & Chief Risk Officer.
5. Head of Digital Financial Services directly reports to AMD & Chief Information Officer with a dotted reporting to Managing Director & CEO.
6. Head of Digital Banking directly reports to DMD & Head of Retail Banking with a dotted reporting to AMD & Chief Information Officer
7. Head of Talent Acquisition, Employer Branding & HR Analytics directly reports to Head of HR Operations for Talent Acquisition role only.
8. Head of Corporate Strategy & Business Management directly reports to DMD & Head of Wholesale Banking with dotted reporting to DMD & Head of Corporate Banking.
9. For further information, please refer to the 'Notes' section under the Direct Reports to Managing Director & CEO page.